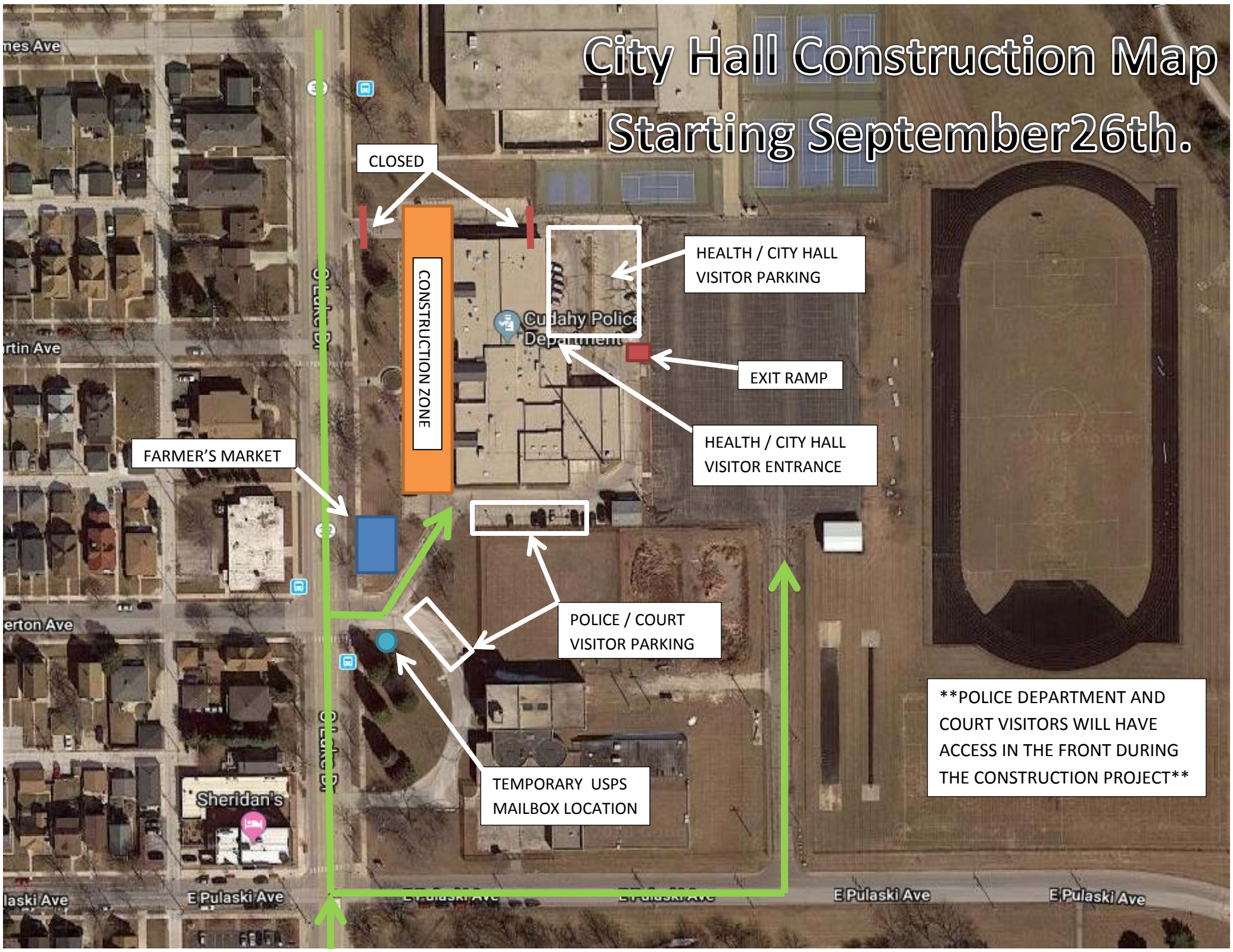


City Hall Construction Map

Starting September 26th.



CLOSED

CONSTRUCTION ZONE

FARMER'S MARKET

HEALTH / CITY HALL VISITOR PARKING

EXIT RAMP

HEALTH / CITY HALL VISITOR ENTRANCE

POLICE / COURT VISITOR PARKING

TEMPORARY USPS MAILBOX LOCATION

****POLICE DEPARTMENT AND COURT VISITORS WILL HAVE ACCESS IN THE FRONT DURING THE CONSTRUCTION PROJECT****